

School of the Performing Arts Faculty and Staff

Coordinator of Theatre
Cherrie Sciro

Director
Mark D. Guinn

Coordinator of Music
Dr. Randall Sorensen

Dr. Joe Alexander	Mary Roberts
Dr. Cain Budds	Jim Robken
Paul B. Crook	Ann Sorensen
Lawrence Gibbs	Adam Spencer
Dr. Gregory Lyons	Dr. John Petzet
Dr. Lisa Maxedon	Toni Troiano
Dr. Kenneth Robbins	Dr. Steele Moegle
Dianne Maroney-Grigsby	

Dr. Jon Barker,
Professor Emeritus

Dr. Sue Holder,
Professor Emeritus

David Wylie,
Professor Emeritus



facebook.com/latechtheatre

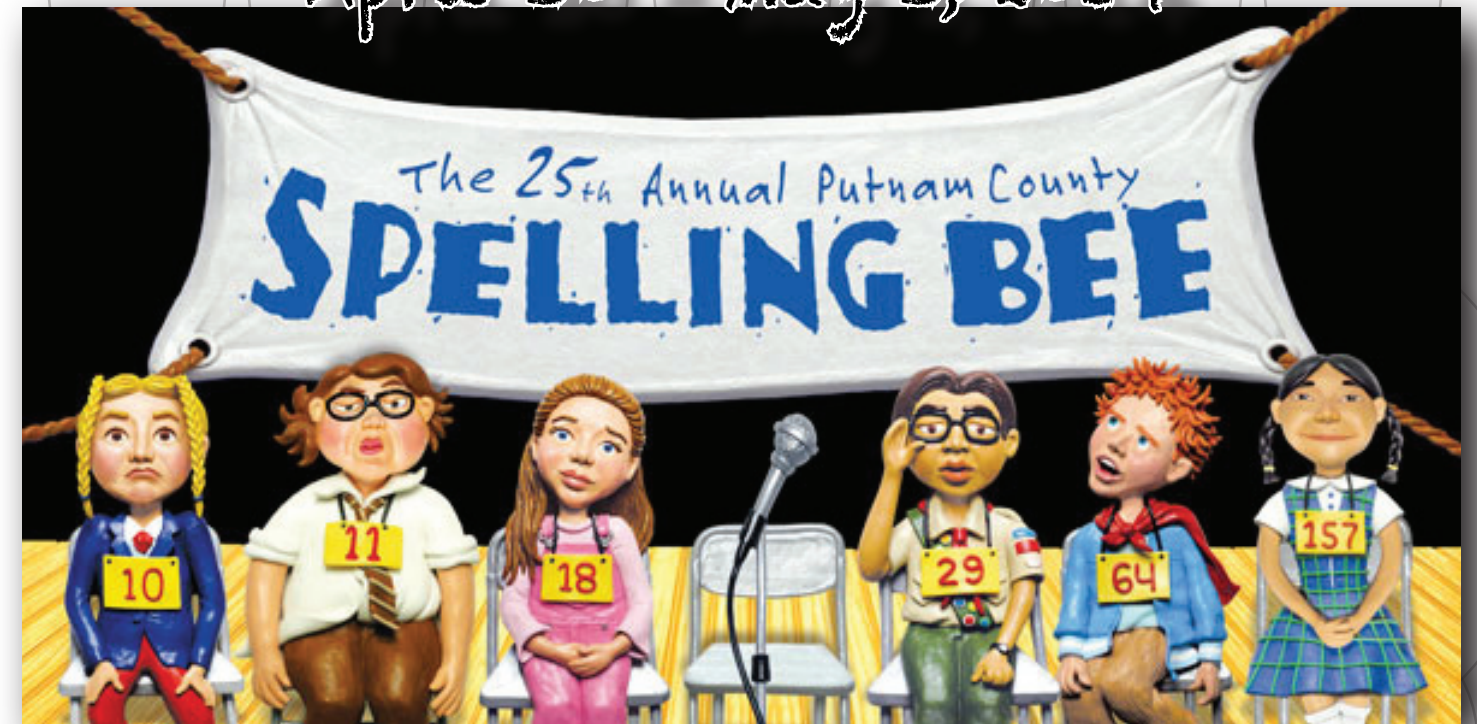
@LATechTheatre



For more information on our season and events, visit us at latechuniversitytheatre.com!

25th Anniversary
Signature
Series Event

School of the Performing Arts Presents
April 30 - May 3, 2014

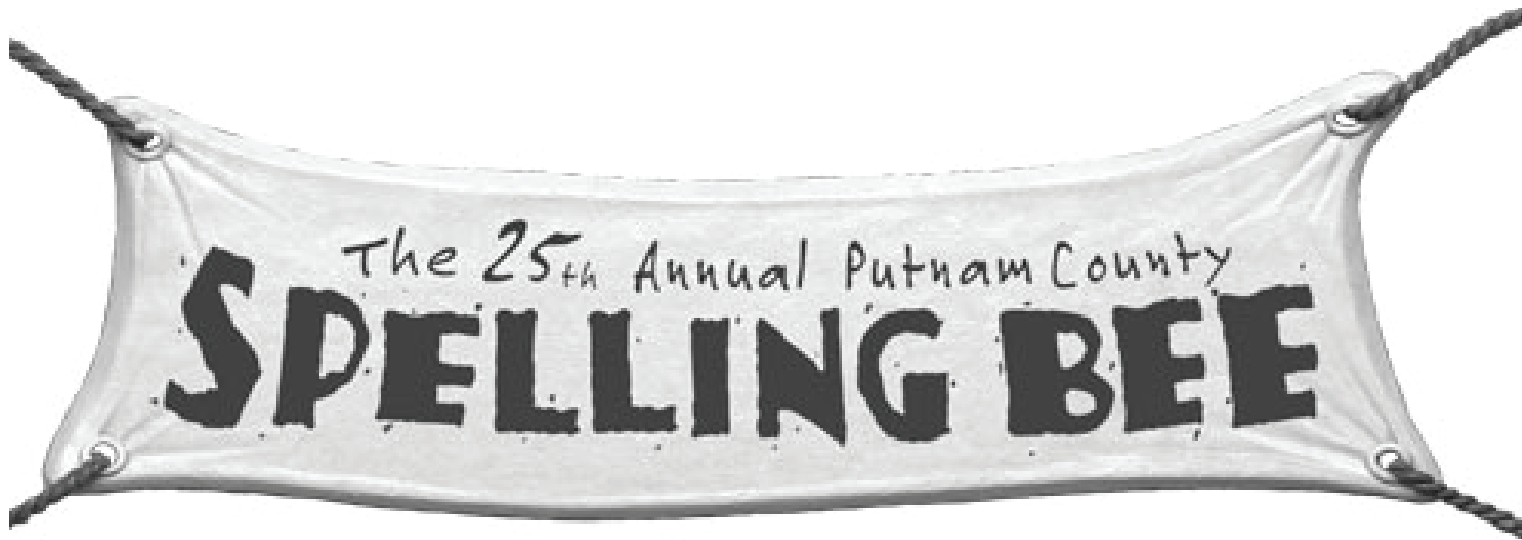


Book by
Rachel Sheinkin

Music & Lyrics by
William Finn

Conceived by
Rebecca Feldman

Directed by
Cherrie Sciro



Music and Lyrics by
William Finn

Book by
Rachel Sheinkin

Conceived by
Rebecca Feldman

Additional Material by
Jay Reiss

Originally Directed on Broadway by
James Lapine

Originally Produced on Broadway by
**David Stone, James L. Nederlander,
Barbara Whitman, Patrick Catullo**
Barrington Stage Company, Second Stage Theatre

"The 25th Annual Putnam County Spelling Bee" is presented through special arrangement with Music Theatre International (MTI).

All authorized performance materials are also supplied by
MTI, 421 West 54th Street, New York, NY 10019
Tel.: (212) 541-4684 Fax: (212) 397-4684
www.MTIShows.com

The video taping or other video or audio recording of this production is strictly prohibited

N e x t S e a s o n



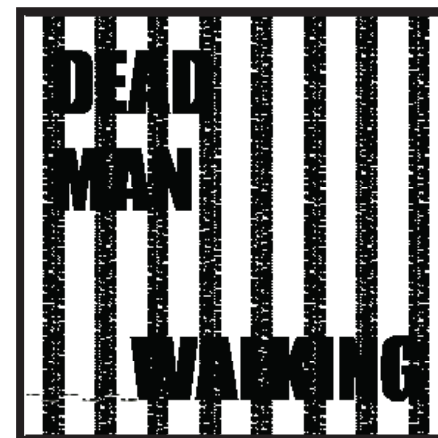
The Last Night of Ballyhoo

A romantic comedy by Alfred Uhry about a contemporary Jewish family living in Atlanta during the 1939 holidays. *Gone with the Wind* has just premiered, and rumors of war are around, but the real concern is who is taking whom to Ballyhoo – the cotillion at the local country club and the social event of the season!



Brighton Beach Memoirs

In this play by Neil Simon, we meet Eugene Jerome and his family, fighting the hard times and sometimes each other—with laughter, tears, and love. It is 1937 in Brooklyn during the heart of the Depression. Fifteen-year-old Eugene Jerome lives in Brighton Beach with his family. As our guide through his "memoirs," Eugene takes us through a series of trenchant observations and insights that show his family meeting life's challenges with pride, spirit, and a marvelous sense of humor.



Dead Man Walking

Dead Man Walking is an unprecedented look at the human consequences of the death penalty. The play is based on the book which is both enlightening and devastating. In 1982 Sister Helen Prejean became the spiritual advisor to Patrick Sonnier, for the murder of two teenagers, who was sentenced to die in the electric chair of Louisiana's State Prison. In the months before Sonnier's death, the Roman Catholic nun came to know a man who was as terrified as he once was terrifying. At the same time, she came to know the families of the victims and also the men whose job it was to execute him - men who often harbored doubts about the rightness of what they were doing.

by Dead Man Walking School Theatre Project

Become a Season Ticket Holder



The Benefits:

Guaranteed Seats: The best seats are available for the entire season. With lifetime renewal privileges, you also have first priority in seating upgrades for the next season.

Parking Pass: For your convenience, your membership comes with a parking permit that secures parking in Adam's Circle, valid for all three performances. Howard Center for the Performing Arts is a wheelchair-accessible facility and special parking is available. Please contact us about any special needs.

Free Ticket Replacement and Exchange: Season ticket holders may exchange their tickets prior to the performance date.

E-Minders: Season ticket holders will receive email reminders of upcoming events from the Box Office.

Admission to the Tech Tony Awards Ceremony: All season ticket holders are invited to attend the annual Tech Tony Awards, a celebration of the Department of Theatre's completion of another successful season.

Guest Pass: Each season ticket holder will receive one guest pass good for one free ticket to one show of his or her choice. While guaranteed a guest to a performance, seating next to him or her is not assured; however, the box office will strive to seat you near your guest.

Starring

Aaron Anthon*
Trey Clark*
Paul B. Crooke*
Ashley Elizabeth Davis
Maddison Gilcrease
Rowan Johnson*
Kevin Keeler
Molly Page*
Jamie Lynn Robinson*

Design Team

Set Design by
Adam Spencer*

Costume Design
Molly Page*

Properties Design
Katie Dumas

Hair and Makeup
Courtney VanEaton

Sound Design
Sydney Mayeaux*

Lighting Design
Adam Spencer*

Production Stage Manager

Molly Mitchell*

Director
Cherrie Sciro*

* Denotes member of Alpha Psi Omega
National Theatre Honor Society

C a s t

Aaron Anthon*	William Barfée
Trey Clark*	Mitch Mahoney
Paul B. Crook*	Douglas Panch
Ashley Davis	Marcy Park
Maddison Gilcrease	Olive Ostrovsky
Rowan Johnson	Chip Tolentino
Kevin Keeler	Leaf Coneybear
Molly Page*	Rona Lisa Peretti
Jamie Lynn Robinson*	Logainne Schwartzandgrubenierre (Schwartzzy)

O r c h e s t r a

Conductor	Dr. Gregory A. Lyons
Conductor	Jim Robken
Software Engineer	Michael Maxey
Synthesizer	Stephanie Wise
Flute	Stetson Bosecker
Clarinet, Soprano Sax, Alto Sax	Brian Smith
Musical Pit Assistant	Cody Ford
Drums	Matthew Cardenas
Cello	Erin Risinger
Keyboard	Sharon McGinley
Percussion	Alek Gonzalez

P r o d u c t i o n S t a f f

First Assistant Stage Manager	Kathleen Schmidt
Second Assistant Stage Manager	Alison Wyant
Production Assistant	Aadrise Johnson
Costume Design Assistant	Richard Babin
Technical Director	Adam Spencer*
Assistant Technical Director	Mark McGinley*
Lighting Assistant/Board Operator	Kathleen Schmidt
Sound Assistant/Board Operator	Marian Fields
Properties Design Assistants	Sarah Flanagan*
	Destiny Garcia*
Fight Directors	Rowan Johnson
	Mark McGinley

*Proud Sponsors
of the 25th Annual
Putnam County Spelling Bee*

**“You’ve got to see us
to believe us!”**



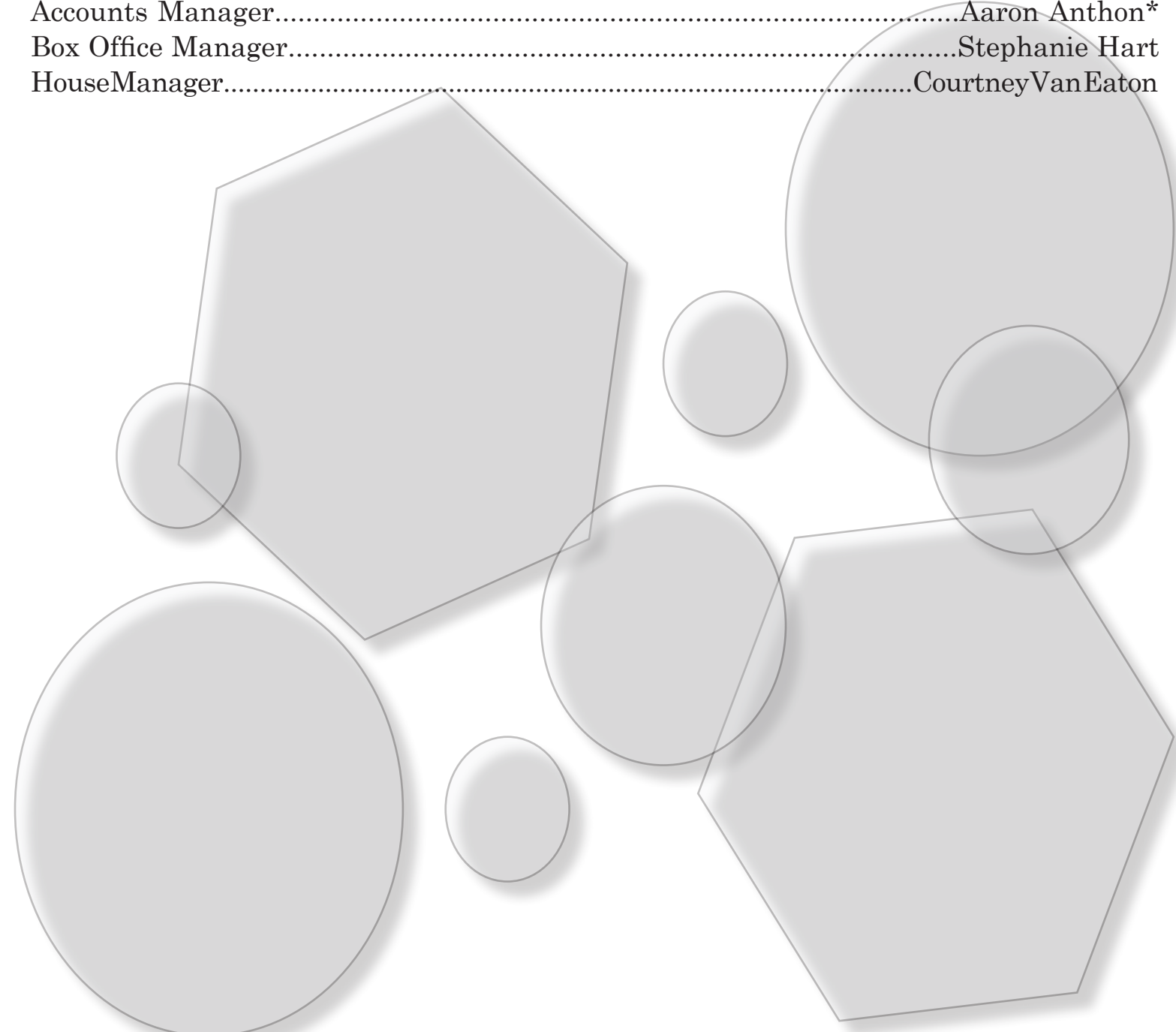
PUTNAM OPTOMETRISTS

Past Winners of the Putnam County Spelling Bee

- 1990 Shanna Dally
- 1991 Billy B. Bob
- 1992 Rona Lisa Peretti
- 1993 Cornetta Cob
- 1994 Daisy Dulane
- 1995 Rob Mane
- 1996 Luke Payne
- 1997 Blue Ive Lee
- 1998 Brittany Pears
- 1999 Selvis Presilly
- 2000 Lance Brosse
- 2001 Justin Humberlake
- 2002 Ayala Balasubramanian
- 2003 Barbie Hall
- 2004 Ashley Ally Apple
- 2005 Dan Dee
- 2006 Paris Filton
- 2007 Richard Shim
- 2008 Ling Tao
- 2009 Benny A.T. Jet
- 2010 Paisly Greene
- 2011 Lucy Lui
- 2012 Siley Myrus
- 2013 Philly Day Myrus

Administrative Staff

- Executive Director.....Cherrie Sciro*
- Theatre Office Staff.....Molly Page
 - Richard Babin
 - Ashley Clarke
 - Mark McGinley
 - Aadrise Johnson
- Publicity Directors.....Marian Fields
 - Rowan Johnson*
 - Molly Mitchell*
- Accounts Manager.....Aaron Anthon*
- Box Office Manager.....Stephanie Hart
- HouseManager.....Courtney Van Eaton



The Cast



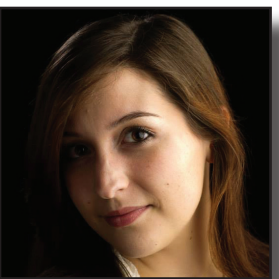
Aaron Anthon* (William Barfée) is a second year graduate student in the Department of Theatre at Louisiana Tech and will be graduating in May. He earned a BBA with his concentration in Entrepreneurship at University of Louisiana at Monroe. Aaron is the proud son of Robert and Tammy Anthon. In his time at Louisiana Tech, he has played the characters of Cig-Man in *KABMan*, Hal in *Proof*, and Stagehand in *The Suicide*. Aaron also served as the Production Stage Manager for *Doubt: A Parable* this past fall, Hair and Makeup Designer for *KABMan*, and Costume Designer for the Graduate Directing Showcase. Aaron plans to pursue a career in playwriting and screenwriting. Aaron got his start in performing at Strauss Young Troupe in Monroe, LA, where he found his love of the arts.



Trey Clark* (Mitch Mahoney) is a first-year graduate student in the department. He received his BA in Theatre from Northeastern State University in Oklahoma where he played Freddy in *Noises Off*, Aaronow in *Glengarry Glen Ross*, Cap'n Mike in *Wonder of the World*, Freddy in *Picasso at the Lapin Agile*, and Wolf in *Red vs The Wolf*. At NSU he earned several awards, including Best Actor in 2011, Best Supporting in 2009, and Best Cameo in 2008. He graduated as a Distinguished Theatre Student.



Paul B. Crook* (Douglas Panch) is an Associate Professor of Acting and Directing at Louisiana Tech University in the School of the Performing Arts, where he teaches both undergraduate and graduate acting and directing courses and supervises all student directing projects. He also serves as the Director of Recruiting for the Department of Theatre. Paul has previously served as the Director of Theatre Arts for Andrew College in Cuthbert, GA; Artistic Coordinator for the SecondStage Theatre in Tuscaloosa, AL; Associate Artistic Director for the Oklahoma Shakespearean Festival in Durant, OK; and currently serves as the Artistic Director of The B & B Theatre, a company that he formed with his wife, Mary Fran, a theatre professor at Grambling State University.



Ashley Elizabeth Davis (Marcy Park) is so excited to be a part of the musical of the year while only being a freshman! At Covington High School she performed as Carnelle in *The Miss Firecracker Contest*, Rosalind in *As You Like It*, Ursula in *The Little Mermaid*, and Lady Thiang in *The King and I*. Miss Davis played Lucy in *13 The Musical* with the Covington, LA Actors Playhouse System. She also sang with the ACDA All-State Honor Choir from 2007-2012, the ACDA National Honor Choir in 2013, and received the Senior Choir Award in 2013. She debuted on the Tech stage as the narrator named Dinazad in *Aladdin and the Wonderful Lamp* during winter quarter, and she looks forward to many more Tech shows to come!



Maddison Gilcrease (Olive Ostrovsky) will graduate in May with her BA in English. For four years, she has been teaching theatre to children of all ages, and she has been teaching private voice lessons for two years. Her credits include Morgiana in *Aladdin and the Wonderful Lamp*, Jane in *Tarzan*, Elle Woods in *Legally Blonde*, Georgeanne in *Five Women Wearing the Same Dress*, Nina Rosario in *In the Heights*, and Helga in *Spring Awakening*. She recently finished filming *All Love is Sudden*, a musical that will be entered into the Louisiana Film Prize Festival. She is thrilled to be a part of the *Spelling Bee* family and excited to continue pursuing theatre and teaching after graduation.

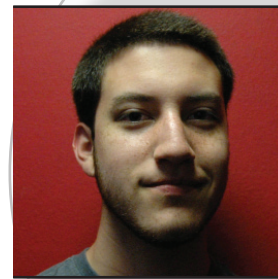
Orchestra Continued



Michael Maxey (Software Engineer) is the Synthesizer Assistant in the Putnam Pit Orchestra. Michael is a junior music performance major studying trombone with Dr. Joe L. Alexander. He was the principal trombone at this year's Louisiana Intercollegiate Honor Band (CBDNA). Michael's future plans involve performing in either a large symphony orchestra or a professional jazz band. His love of jazz is shown with his performance and numerous solos with the Louisiana Tech Jazz Ensemble, Wind Ensemble, and Low Brass Ensemble.



Matthew Cardenas (Drums) is the drum set player for the *Putnam* Pit Orchestra. Matthew is currently pursuing a degree in music and studying percussion under Dr. Gregory Lyons. Matthew has been a participant in the Louisiana Tech Intercollegiate Honor Band (CBDNA) and is also a member of the Louisiana Tech Percussion Ensemble directed by Dr. Gregory Lyons. He is a member of the Louisiana Tech University Wind Ensemble and demonstrates mastery in many areas of percussion.



Alek Gonzalez (Percussion) is the auxiliary percussionist for the *Putnam* Pit Orchestra. Alek is a freshman music major studying percussion under Dr. Gregory Lyons. He is a member of the Louisiana Tech University Wind Ensemble, Percussion Ensemble, and Jazz Ensemble. Alek plans on completing his degree in music at Tech, attend graduate school, and eventually work in the entertainment/ film industry as a sound designer.



Cody Ford (Pit Manager) is the orchestra pit assistant and understudy to Mr. Jim Robken and Dr. Gregory Lyons. Cody is a freshman music major studying euphonium with Dr. Joe L. Alexander, conducting with Mr. Jim Robken, and piano with Dr. Steele Moegle. Cody was the principal euphonium with the Louisiana Intercollegiate Honor Band (CBDNA). He is also a member of the Louisiana Tech University Wind Ensemble, Jazz Ensemble, and Low Brass Ensemble.

Orchestra



Stetson Bosecker (Flute) is from Tullos, LA and is the flute player of the Putnam Pit Orchestra. Stetson is a recent Louisiana Tech University graduate with a degree in mathematics and a minor in physics. He is also the principal flute with the Louisiana Tech Wind Ensemble and participated in this year's Louisiana Intercollegiate Honor Band (CBDNA).



Brian Smith (Clarinet, Soprano Sax, Alto Sax) is the woodwind specialist for the Putnam Pit Orchestra. Brian is a music education major studying saxophone with Mr. Lawrence Gibbs. Brian is also a member of the Louisiana Tech University Saxophone Ensemble, Wind Ensemble, and Jazz Ensemble in which he has performed on horn, clarinet, flute, alto, tenor, and baritone saxophone. He recently was a member of the Louisiana Intercollegiate Honor Band on clarinet and horn. His future plans involve being a high school band director and attending graduate school for music. Brian demonstrates his enormous talent in the Orchestra by performing on clarinet, alto, and soprano saxophone.



Erin Risinger (Cello) is a native of Shreveport, LA and is the cellist for the Putnam Pit Orchestra. Erin is a freshman education major with a focus in English. She has been playing the cello for ten years. She plans to finish her degree at Louisiana Tech University and pursue a career as a high school English teacher.

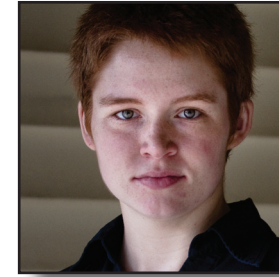


Sharon McGinely (Keyboard) is a graduate of Carson-Newman College in Jefferson City, TN, where she studied music and theatre. She was on staff at CN as an accompanist from 2004 - 2013, as well as pianist at her church. She has performed in a number of musicals, but only recently took the opportunity to play in the pit for the first time, for The Mystery of Edwin Drood. She's excited to take part in this production of Spelling Bee, and would like to thank Mark and baby Isabelle for allowing her to take time away from her current position of Momma.



Stephanie Wise (Synthesizer) is a senior music major studying clarinet under Mr. Lawrence Gibbs. She is the principal clarinet player in the Louisiana Tech Wind Ensemble and a recent participant in the Louisiana Intercollegiate Honor Band (CBDNA). She also studied piano under Dr. Steele Moegle. She plans on graduating Louisiana Tech University with a degree in music and working as a church music director.

The Cast Continued



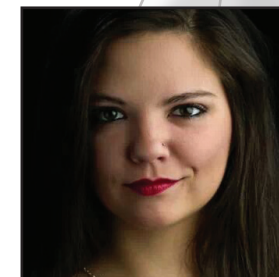
Rowan Johnson* (Chip Tolentino) holds a BA in Theatre Arts from Hendrix College and specializes in physical theatre, training at such institutions as the Accademia dell'Arte, Flic Scuola di Circo, and the Universidad Complutense de Madrid. Credits include Director of *We Are Thy Labyrinth*, Assistant Director of *The Suicide*, and Fight Director for *Living Dead in Denmark*. As a graduate student at Tech, Johnson serves as President of the Omega Phi chapter of the Alpha Psi Omega National Theatre Honor Society. Rowan is a member of the International Order of the Sword and Pen.



Kevin Keeler, Jr. (Leaf Coneybear) is a senior music education major from Houghton, LA. Though making his theatrical debut, Kevin is not new to performing, playing saxophone in Louisiana Tech's Wind Ensemble as well as lead tenor sax in the university's Jazz Ensemble. This past winter, Kevin participated in the Louisiana Intercollegiate Honor Band, and will be traveling with both the jazz and wind ensembles to Baton Rouge next fall to represent Louisiana Tech at the Louisiana Music Educators Association All-State High School Honor Band Festival. Kevin is a brother of Phi Mu Alpha Sinfonia, a national music fraternity.



Molly Page* (Rona Lisa Peretti) bids a bittersweet farewell to the Howard stage in her final show before graduating with an MA in Theatre this May. Past Louisiana Tech credits include Blanche Shannon/Amanda Wingfield in *Two By Tenn*, Raissa Filipovna in *The Suicide*, and Claire in *Proof*. Regional credits include Kitty in *The Drowsy Chaperone*, Miss Adelaide in *Guys & Dolls*, Maria in *Twelfth Night*, and Brooke in *Noises Off!*. She also served as Costume Designer for the production. Molly is thrilled to be joining the Walt Disney Company this June as a member of the Disney College Program. "Laughter is timeless. Imagination has no age, and dreams are forever."



Jamie Lynn Robinson* (Logainne Schwartzandgrubenierre, Schwartzzy) is a senior Theatre major. At Tech, she played the role of Trash Ninja in the 2012 production of *KAB Man*, Fastrada in *Pippin*, Rita in *Opera Workshop: Love and Luck*, composed music for *The Suicide* and was the Sound Designer for *Proof*. Jamie enjoys technical theatre and was the First Assistant Stage manager of Louisiana Tech's production of *Our Town* in 2011.

Student Designers



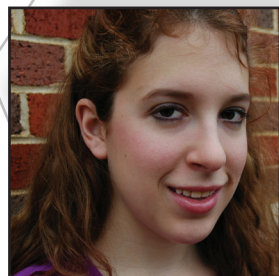
Kathryn Dumas (Properties Designer) is a sophomore design emphasis Theatre major from El Dorado, Arkansas. Her past credits here at Tech include Properties Designer for *Doubt, A Parable*; Costume Assistant for *The Suicide* and *KAB Man* and Assistant Stage Manager for *Proof*. Most recently she applied her talents as Costume Designer for our last show, *Aladdin and the Wonderful Lamp*.



Molly Page* (Costume Designer) bids a bittersweet farewell to the Howard stage in her final show before graduating with an MA in Theatre this May. Past Louisiana Tech credits include Blanche Shannon/Amanda Wingfield in *Two By Tenn*, Raissa Filipovna in *The Suicide*, and Claire in *Proof*. Regional credits include Kitty in *The Drowsy Chaperone*, Miss Adelaide in *Guys & Dolls*, Maria in *Twelfth Night* and Brooke in *Noises Off!*. She also served as Costume Designer for the production. Molly is thrilled to be joining the Walt Disney Company this June as a member of the Disney College Program. "Laughter is timeless. Imagination has no age, and dreams are forever."



Courtney VanEaton (Hair & Makeup Designer) crossed the Tech Theatre stage for the first time last fall as Sister James in *Doubt, A Parable*. Before joining us, she also played Paulette in *Legally Blonde* with the Academy of Children's Theatre, Mary Warren in *The Crucible* at Evangel Christian Academy, and Donna in *Give Her the Eye* at Texas Christian University. Miss VanEaton was a National Monologue first-place winner with the International Theatre Society in Lincoln, Nebraska in 2011, and is a three-time state monologue champion. Most recently, Miss VanEaton appeared on the Tech stage as Marizaydah in *Aladdin and the Wonderful Lamp*.



Sydney Mayeux (Sound Designer) is a senior Theatre major from Prairieville, LA. At Tech she was Stage Manager for *The Fights Before Christmas*, Sound Designer for *The Suicide*, and Assistant Sound Designer and Sound Board Operator for *Robin Hood*. She was Sound Board Operator for *Our Town* in 2011; *KAB Man* in 2012; and *Doubt, A Parable* in 2013. Sydney also enjoys acting, and was part of the ensemble of *Pippin* in 2012. She received Tech Tony Awards for Outstanding Achievement in Dance and Movement on Stage and Best Sound Design.

Music Organizations



KAPPA KAPPA PSI

Kappa Kappa Psi National Honorary Band Fraternity is a fraternal organization that promotes the advancement of college and university bands through dedicated service and support to bands; comprehensive education; leadership opportunities; and recognition; for the benefit of its members and society.



TECH CHORAL SOCIETY

Tech Choral Society was formed to support the choral program at Louisiana Tech University. This student run organization assists all choirs by providing service projects such as tailgating and donating items to the music program. Tech Choral Society provides scholarships and other forms of financial assistance to undergraduate students at our university. Tech Choral Society is a major contributor when the choirs travel internationally and perform.

PHI EPSILON GAMMA

Phi Epsilon Gamma is an organization dedicated to the promotion of color-guard in the university setting.

TAU UPSILON BETA ALPHA

Description: The purpose of Tau Upsilon Beta Alpha is to help maintain current and future tuba equipment, while promoting brotherhood/sisterhood between all members whether or not they play tuba. Tau Upsilon Beta Alpha is also a great place for people that have a general interest in tubas and wish to be affiliated with the tuba section.

Music Organizations



SIGMA ALPHA IOTA

SAI is an international music fraternity whose mission is to encourage, nurture and support the art of music.



PHI MU ALPHA SINFONIA

The objective of this Fraternity shall be for the development of the best and truest fraternal spirit; the mutual welfare and brotherhood of musical students; the advancement of music in America and a loyalty to the Alma Mater.



PHI BUDA RUDA

Phi Boota roota is a fraternity dedicated to college drumline unity. Phi Boota roota was established in 1971 at the University of Southern Mississippi by founding father Connie Sprinkle. In 1982 John Paul Gay of Louisiana State University became the national founding father by helping establish 10 new chapters.



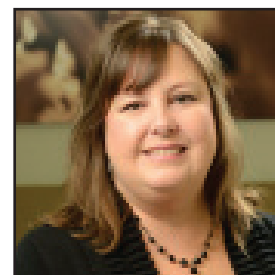
TAU BETA SIGMA

We provide exceptional service to collegiate bands and promote equality and diversity, including empowering women in the band profession. We cultivate leadership, educational achievement, music appreciation and community development.

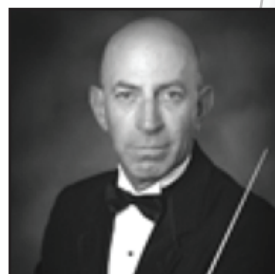
Creative Team



Cherrie Sciro* (Director) is the Coordinator of Theatre and Professor in the School of the Performing Arts at Louisiana Tech. She is also known nationally for her Broadway credits, which include Production Coordinator of the Tony award-winning productions of *CATS*, *Les Miserables*, *Phantom of the Opera*, and *Doin' What Comes Natur'ly: an All-star Tribute to Ethel Merman*, featuring Laine Kazan, Patti LuPone, Andrea Martin, Elaine Stritch and Bette Midler. She was also the Road Manager for the 1999 Hard Rock Rockfest in Atlanta, GA, and the Stage Manager for the 2001 New Year's Eve in Time Square in New York City. Her international credits include the London, England productions of *Les Miserables*, *Phantom of the Opera*, *Miss Saigon*, *Follies*, and *Sunset Boulevard*. She also served as the Production Manager for the Olympic Games in Barcelona, Spain and Atlanta Georgia.



Dr. Lisa Maxedon (Music Director) is Associate Professor of Music and Head of Vocal Studies and Opera Theatre at Louisiana Tech University, where she teaches Applied Voice, Opera Workshop, Vocal Diction, and Vocal Pedagogy. Dr. Maxedon was selected as Runner-Up in the Mississippi N.A.T.S.A.A. Artist Awards Competition in 2004. She has performed leading operatic roles in Illinois, Mississippi, Tennessee, and Alaska. She has also been featured as a guest artist with orchestras throughout the Midwest and South. In 2005, she presented her research findings, "The Ability of College Choral/Vocal Teachers to Screen for the Unhealthy Speaking Voice in Singers", at the International Symposium for the Care of the Professional Voice in Philadelphia, PA. Dr. Maxedon is currently president of the Louisiana Chapter of the National Association of Teachers of Singing.



Jim Robken (Conductor) is the Director of the University Wind Ensemble, the Marching Band of Pride, and the Hoop Troop Basketball Band. For several years he coordinated the Ark-La-Tex Band Conference, a unique event bringing the most talented wind and percussion players from Louisiana, Texas, and Arkansas together for a weekend of music making with internationally known guest conductors. Mr. Robken is active as a conductor, clinician, and adjudicator. At Louisiana Tech, he teaches Advanced Conducting, Marching Band Drill Design, and Arranging. Mr. Robken is an active arranger of music for athletic bands. Prior to arriving at Tech, he was the Director of the University of Arkansas Razorback Marching Band. His bands have appeared in numerous bowl games and NCAA Basketball Tournament venues throughout the nation.



Dr. Gregory Lyons (Conductor) is an assistant professor of music at Louisiana Tech University where he teaches applied percussion, directs the percussion ensemble, coaches the drum line, and serves as head of instrumental music education. He earned the Doctor of Musical Arts degree in percussion performance from The Ohio State University, the Master of Music degree in percussion performance from Central Michigan University, and the Bachelor of Music Education degree from the Wheaton College Conservatory (IL). He has been a frequent adjudicator and clinician throughout the Midwest. He currently performs as principal percussion with the Rapides Symphony Orchestra. He has appeared frequently across North Louisiana with Implosion Percussion Group, comprised of Dr. Mel Mobley (University of Louisiana at Monroe) and area percussionists. Dr. Lyons serves as President of the Louisiana Chapter of the Percussive Arts Society. He is a proud endorser of Grover Pro Percussion, Vic Firth Sticks and Mallets, and SABIAN Cymbals.

Creative Team Continued



Dianne Maroney-Grigsby (Choreographer) is the Staff Choreographer and an Instructor in the School of the Performing Arts. She received her Bachelor of Arts from Grambling State University and her Master of Arts from Louisiana Tech University. Dianne has instructed dance students in America, Europe, Asia, and Africa for the Alvin Ailey Dance Company. She is also the choreographer for the Orchesis Dance Company. Dianne has been the featured dancer in Twin City Ballet Company. Her training is in Modern, Horton, Graham, Classical Ballet, Tap, and Jazz techniques. She teaches Dance for the Theatre.



Dr. Steele Moegle (Pianist) is an Associate Professor of Music at Louisiana Tech University. She serves as the head of three areas: piano studies, collaboration/accompanying, and music appreciation studies. Her teaching responsibilities include applied piano, piano classes, music history, and music appreciation. In addition to teaching, she is well known throughout the region as a soloist and collaborator. A doctoral graduate of the University of Colorado at Boulder, Dr. Moegle has studied performing, coaching, and collaborative techniques with internationally known pianists and coaches, such as Robeert Spillman, Larry Graham, Mutsumi Moteki, and Constance Carroll.



Rowan Johnson* (Fight Director) holds a BA in Theatre Arts from Hendrix College and specializes in physical theatre, training at such institutions as the Accademia dell'Arte, Flic Scuola di Circo, and the Universidad Complutense de Madrid. Credits include Director of *We Are Thy Labyrinth*, Assistant Director of *The Suicide*, and Fight Director for *Living Dead in Denmark*. As a graduate student at Tech, Johnson serves as President of the Omega Phi chapter of the Alpha Psi Omega National Theatre Honor Society. Rowan is a member of the International Order of the Sword and Pen.



Mark McGinley* (Fight Director) is a second year graduate student from Jefferson City, Tennessee. Last year he made his Stone Theatre debut as Alexander Petrovich in *The Suicide*. At Carson-Newman College he played Orlando in *As You Like It* and Captain Hook in *Peter Pan*. He was Ben Silverman in *The Sunshine Boys* at Morristown Theatre Guild, Tim in *Noises Off* at Encore Theatrical Productions, and Marcellus/The Player King in *Hamlet* at the Wild Thyme Players.



Stephanie Hart (Dance Captain) received her BA in Speech/Theatre at Louisiana Tech University. Last spring she made her graduate debut as Serafima in *The Suicide*, and portrayed Sister Aloysius in *Doubt, A Parable* last fall. At Tech she played the role of Inez in *No Exit* in 1990. With Hidden Stages Productions she played the role of Gertie in *The Sea Horse*. At Ruston Community Theatre she played Peaches in *The Red Velvet Cake War*, Twink in *Dearly Beloved*, and Vera Walters in *Nana's Naughty Knickers*. Most recently she served as an Assistant Director in our last show of the season, *Aladdin and the Wonderful Lamp*.



Molly Mitchell* (Production Stage Manager) is a sophomore Theatre and Psychology double major from Ruston, LA. This is her first show at Tech as Production Stage Manager, and she is delighted by the opportunity to work with a talented stage management team. This Winter, Molly was the House Manager for *Aladdin and the Wonderful Lamp*. Last year, she was the Production Assistant for KAB Man and the First Assistant Stage Manager for *The Suicide*. Last summer, she was the Production Stage Manager for the Spare Change Initiative Theatre's debut production, *Rewrite*. She will be resuming this position this summer.

Music Faculty Continued

Photo
not
Available



Ann Sorensen (Adjunct Instructor - Orchestral Strings, Director of Chamber Strings) teaches orchestral strings and directs the Louisiana Tech Chamber Orchestra. She also teaches music appreciation at Delta Community College in Monroe, LA and performs with the Monroe Symphony, Rapides Symphony, and the South Arkansas Symphony. Mrs. Sorensen maintains a private violin studio in Ruston, LA.

Shayla Blake (Staff Accompanist) Shayla Blake studied at Stetson University (FL) and continued at Texas Tech University where she was a student of William Westney, Artist-in-Residence. As an undergraduate, she was a winner in the university's concerto competition. After achieving her Bachelor's degree in piano performance, she then completed her Master's degree also in piano performance during which time, she was a graduate teaching assistant. Mrs. Blake maintains a private piano and flute studio and has previously taught on the music faculty at Louisiana Tech University. She has been interim Choral Director at Ruston High School and has directed choirs of all ages in area churches in addition to serving as a worship leader. She is currently Staff Accompanist at Louisiana Tech University. Over the years, Mrs. Blake has been the featured pianist for conferences and has maintained an active accompanying schedule. As a composer and arranger, she has published several choral pieces and has two new releases scheduled for publication in 2011. She is the Ruston/Monroe Regional Coordinator for the Nashville Songwriters Association International.

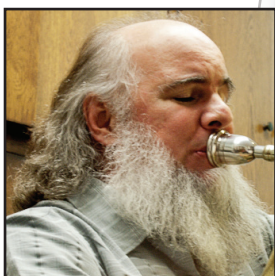
Music Faculty Continued



Jim Robken (Assistant Professor of Music, Director of Bands) is the Director of the University Wind Ensemble, the Marching Band of Pride, and the Hoop Troop Basketball Band. For several years he coordinated the Ark-La-Tex Band Conference, a unique event bringing the most talented wind and percussion players from Louisiana, Texas, and Arkansas together for a weekend of music making with internationally known guest conductors. Mr. Robken is active as a conductor, clinician, and adjudicator. At Louisiana Tech, he teaches Advanced Conducting, Marching Band Drill Design, and Arranging. Mr. Robken is an active arranger of music for athletic bands. Prior to arriving at Tech, he was the Director of the University of Arkansas Razorback Marching Band. His bands have appeared in numerous bowl games and NCAA Basketball Tournament venues throughout the nation.



Dr. John Martin Petzet (Assistant Professor of Music - Voice, Director of Choral Activities) received his Masters and Doctorate in Choral Conducting from the University of Kansas (Magna Cum Laude) and Texas Tech University (Summa Cum Laude) respectively. He has studied with Dr. John Paul Johnson and Dr. John H. Dickson and is a native of Tulsa, Oklahoma, where he taught middle school and high school for 5 years. The American Choral Directors Association Choral Journal published his article, "Matthew Harris's Shakespeare Songs-The Bard's lyrics meet American Popular Music" in August 2011. Dr. Petzet has also written two compact disc reviews for the Choral Journal and presented interest sessions in Kansas, Oklahoma, Louisiana, Arkansas, Alabama, Mississippi, and North Dakota. He is the College/University Repertoire and Standards Chair for the Louisiana ACDA Chapter. Dr. Petzet sang, toured, and recorded with the Kansas City Chorale under the direction of Charles Bruffy during the 2003-2004 season.



Joe L. Alexander (Professor of Music - Theory/Composition and Low Brass, Head of Theory Composition) joined the faculty of Louisiana Tech University's Department of Music in the Fall of 2001. He studied composition with Newel Kay Brown, Douglas Knehans, Martin Mailman, Cindy McTee, and James Riley; and tuba with James Michael Dunn. Performances of his original compositions include recitals/presentations at the Birmingham Art Music Alliance, the Louisiana Composers' Consortium, and the National Association of Composers to name a few. His music has been featured at Bowling Green State University's annual New Music & Art Festival, and New Music for Young Ensemble Composers' Competition. In 2002, the Monroe (Louisiana) Symphony Orchestra commissioned him to compose Louisiana Blue (baritone voice, flute, piano with orchestra accompaniment). His Two Bryant Songs (soprano, Bb clarinet and piano) are recorded on the CD, Winds and Voices, by Living Artist Recordings.



Dr. Cain Budds (Associate Professor of Music - Guitar, Head of String Area) is currently Assistant Professor of Guitar and Music Theory as well as Head of the String Area at Louisiana Tech University where he heads a vibrant guitar studio. He received his Doctor of Musical Arts degree in classical guitar performance at Arizona State University where he was a student of Frank Koonce. While in residence there, he served as a teaching assistant and faculty associate in the internationally recognized classical guitar program. In addition to his teaching duties, he assisted in the editing of the second performing edition: Johann Sebastian Bach: The Solo Lute Works, by Professor Koonce which was recently published by Neil A. Kjos company in San Diego. He has performed numerous solo and chamber recitals in the U.S. and Mexico and in Master Classes with outstanding performers including Eliot Fisk, Flavio Cucchi, Paul Henry, William Kanengiser, Margarita Escarpa, Kevin Gallagher, Stephen Robinson, Javier Garcia-Moreno, and Pepe Romero.

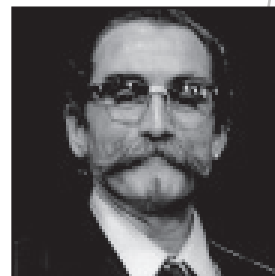
Theatre Faculty



Cherrie Sciro* is the Coordinator of Theatre and Professor in the School of the Performing Arts at Louisiana Tech. She is also known nationally for her Broadway credits, which include Production Coordinator of the Tony award-winning productions of *CATS*, *Les Misérables*, *Phantom of the Opera*, and *Doin' What Comes Natur'llly: an All-star Tribute to Ethel Merman*, featuring Laine Kazan, Patti LuPone, Andrea Martin, Elaine Stritch and Bette Midler. She was also the Road Manager for the 1999 Hard Rock Rockfest in Atlanta, GA, and the Stage Manager for the 2001 New Year's Eve in Time Square in New York City. Her international credits include the London, England productions of *Les Misérables*, *Phantom of the Opera*, *Miss Saigon*, *Follies*, and *Sunset Boulevard*. She also served as the Production Manager for the Olympic Games in Barcelona, Spain and Atlanta Georgia.



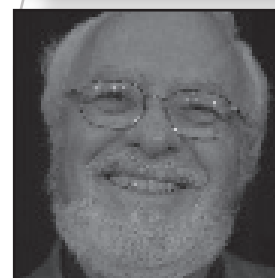
Paul B. Crook* is an Associate Professor of Acting and Directing at Louisiana Tech University in the School of the Performing Arts, where he teaches both undergraduate and graduate acting and directing courses and supervises all student directing projects. He also serves as the Director of Recruiting for the Department of Theatre. Paul has previously served as the Director of Theatre Arts for Andrew College in Cuthbert, GA; Artistic Coordinator for the SecondStage Theatre in Tuscaloosa, AL; Associate Artistic Director for the Oklahoma Shakespearean Festival in Durant, OK; and currently serves as the Artistic Director of The B & B Theatre, a company that he formed with his wife, Mary Fran, a theatre professor at Grambling State University. Paul is the Louisiana State Chair for the Kennedy Center/American College Theatre Festival, Region VI and the rising Chair of the College and University Division of the Southeastern Theatre Conference. Creatively, Paul has directed and acted in theatres around the country. He and Mary Fran have four precocious children: George, CeCe, Bryant Ford, and Mary Ellis.



Mark D. Guinn is the Director of the School of the Performing Arts, Production Manager and Professor in the SPA. He is an anomaly within his profession. Dancing the sword's edge between the artistic and production side of theatre, Mark found theatre searching for a new way to light his meta-matic sculptures. Twenty years later, with a lighting instrument in one hand and a sword in the other fightin', lightin', and directin' shows from NYC to Yokahoma and Memphis to Banff, Mark continues to pursue Einstein's observation, "The most beautiful thing we can experience is the mysterious. It is the source of all true art and science." Mark received the 2010-2011 University Senate Chair Award as the "Outstanding Professor of the Year."



Dianne Maroney-Grigsby is the Staff Choreographer and an Instructor in the School of the Performing Arts. She received her Bachelor of Arts from Grambling State University and her Master of Arts from Louisiana Tech University. Dianne has instructed dance students in America, Europe, Asia, and Africa for the Alvin Ailey Dance Company. She is also the choreographer for the Orchesis Dance Company. Dianne has been the featured dancer in Twin City Ballet Company. Her training is in Modern, Horton, Graham, Classical Ballet, Tap, and Jazz techniques. She teaches Dance for the Theatre.



Dr. Kenneth Robbins* has recently stepped down as Director of the School of the Performing Arts to focus on his role as a professor and playwright. Highlights of his career include recognition by the College of Education, Georgia Southern University, as Alum of the Year, Louisiana Division of the Arts as a Fellowship recipient in Theatre, a Japan Foundation Arts Fellowship, and an appointment as a Fulbright Scholar to Skopje, Macedonia where he taught American Studies at Sts. Cyril and Methodius University. He has directed professionally at the Barter Theatre in Virginia, the Black Hills Playhouse in South Dakota, Stage West in Nebraska, and the Jacksonville Summer Repertory Theatre in Florida.

Theatre Faculty Continued



Adam Spencer* is the Technical Director for the Department of Theatre. He is a native of Nebraska where he attended Chadron State College and received his Bachelor's of Arts in theatre. After graduating he worked professionally at several theaters around the nation, including The Olney Theatre Center in Olney, MD and The Lexington Children's Theatre in Lexington, KY. He studied for an MFA in theatre at Illinois State University where he focused on scenic and lighting design. After graduate school he worked for two years at the Birmingham Children's Theatre in Birmingham, AL as the Technical Director and Resident Designer, where he designed sets for shows such as *Young Abe Lincoln*, and *The Adventures of Tom Sawyer*. Mr. Spencer teaches Theatre Appreciation, Intro to Theatre, Theatre Practicum, Technical Direction, and Stagecraft.



AΨΩ

Alpha Psi Omega

National Theatre Honor Society

President: Rowan Johnson

Vice President: Destiny Garcia

Business Manager: Sydney Mayeux

Pledge Marshall: Steven Vick

Tech Theatre Players

Come and join the oldest student organization at Louisiana Tech!
Meetings are held every Wednesday at 5:05pm

President: Sarah Flanagan

Vice President: Steven Vick

Treasurer: Molly Mitchell

Secretary: Alison Wyant

Parliamentarian: Mark McGinley

Historian: Hannah Miglicco

Music Faculty



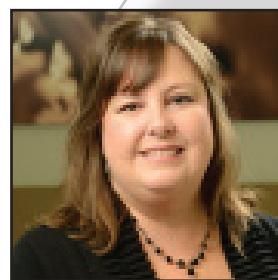
Dr. Randall Sorensen (Coordinator and Associate Professor of Music - High Brass) is a versatile performer and educator with 16 years of college teaching, 27 years of private trumpet instruction, and many years of performing in orchestras, jazz ensembles, brass quintets, brass bands, wind ensembles, and as a soloist and member of various chamber ensembles. He joined the faculty at Louisiana Tech in 2004 and has performed frequently on and off campus as a soloist and ensemble member. Dr. Sorensen was a member of the U.S. Army from 1994-1998 during which time he performed with the U.S. Army Signal Corps Band of Ft. Gordon, GA (1994-1996) and the Army Ground Forces Band of Ft. McPherson located in Atlanta, GA (1996-1998). As a member of the Armed Forces Band at Ft. McPherson, Dr. Sorensen performed as principal trumpet on a number of selections recorded for the band's 1998 CD, *Soundscapes*.



Lawrence Gibbs (Associate Professor of Music - Single Reeds, Director of Jazz Activities, Associate Director of Bands) joined the Louisiana Tech faculty in 1989. Mr. Gibbs teaches clarinet and saxophone, directs the Jazz Ensemble and Symphonic Band and assists with the Marching Band of Pride. He has studied with Eugene Zoro, James Gillespie, and Alan Keating. An active performer, Mr. Gibbs frequently appears as a soloist and chamber musician and has performed with the Monroe, Shreveport, and South Arkansas Symphonies. Mr. Gibbs's most recent performance was with the Monroe Symphony Orchestra playing the Artie Shaw Clarinet Concerto. Mr. Gibbs is also the founder and director of the Lawrence Gibbs Orchestra and the Russ-Town Band, a select community band based in Ruston.



Dr. Gregory Lyons (Assistant Professor of Music - Percussion, Head of Instrumental Music Education, Assistant Director of Band) is an assistant professor of music at Louisiana Tech University where he teaches applied percussion, directs the percussion ensemble, coaches the drum line, and serves as head of instrumental music education. He earned the Doctor of Musical Arts degree in percussion performance from The Ohio State University, the Master of Music degree in percussion performance from Central Michigan University, and the Bachelor of Music Education degree from the Wheaton College Conservatory (IL). He has been a frequent adjudicator and clinician throughout the Midwest. He currently performs as principal percussion with the Rapides Symphony Orchestra. He has appeared frequently across North Louisiana with Implosion Percussion Group, comprised of Dr. Mel Mobley (University of Louisiana at Monroe) and area percussionists. With Dr. Darin Olson (University of Wisconsin-Madison), he forms the Olson/Lyons Duo, which has appeared at percussion conferences and events in Illinois, Texas, Louisiana, and Oklahoma. Dr. Lyons serves as President of the Louisiana Chapter of the Percussive Arts Society. He is a proud endorser of Grover Pro Percussion, Vic Firth Sticks and Mallets, and SABIAN Cymbals.



Dr. Lisa Maxedon (Head of Vocal Studies, Director of Opera Workshop, Assistant Professor of Music - Voice) teaches Applied Voice, Opera Workshop, Vocal Diction, and Vocal Pedagogy. Dr. Maxedon was selected as Runner-Up in the Mississippi N.A.T.S.A.A. Artist Awards Competition in 2004. She has performed leading operatic roles in Illinois, Mississippi, Tennessee, and Alaska. She has also been featured as a guest artist with orchestras throughout the Midwest and South. In 2005, she presented her research findings, "The Ability of College Choral/Vocal Teachers to Screen for the Unhealthy Speaking Voice in Singers", at the International Symposium for the Care of the Professional Voice in Philadelphia, PA. Dr. Maxedon is currently president of the Louisiana Chapter of the National Association of Teachers of Singing.